

Board Construction Summary

Please review all the information below. It is all the data we're using to build your boards.

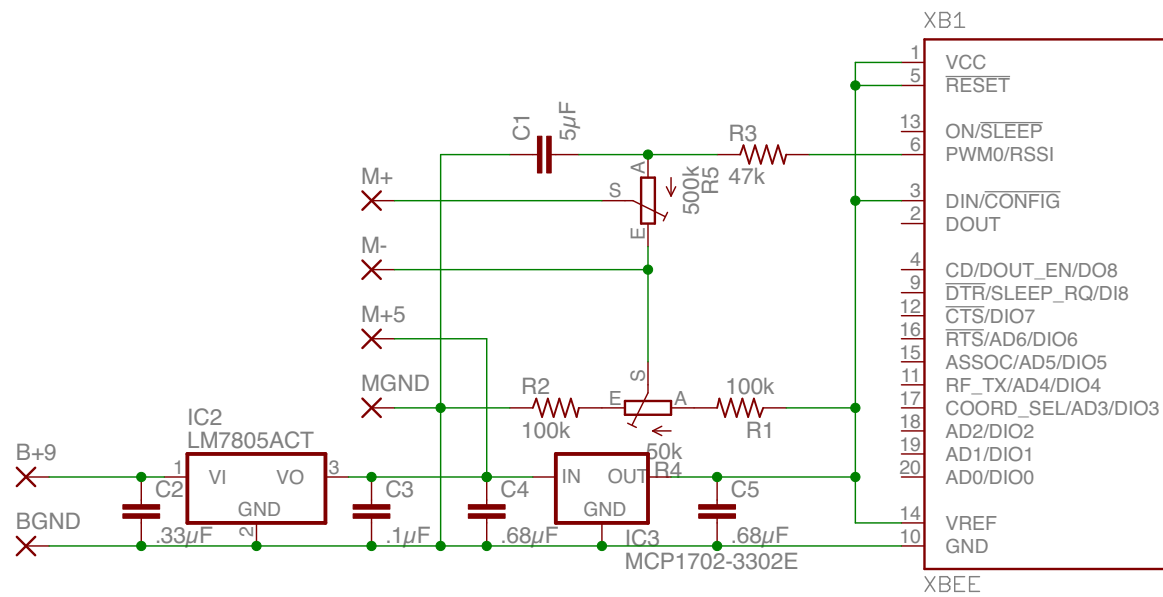
Click here if you face any issues with this order.	
Part : DYNOCAR-TX / Rev : 1	AFV # : afv1-42373
Quantity : 4 Boards	Turntime : 4 Days

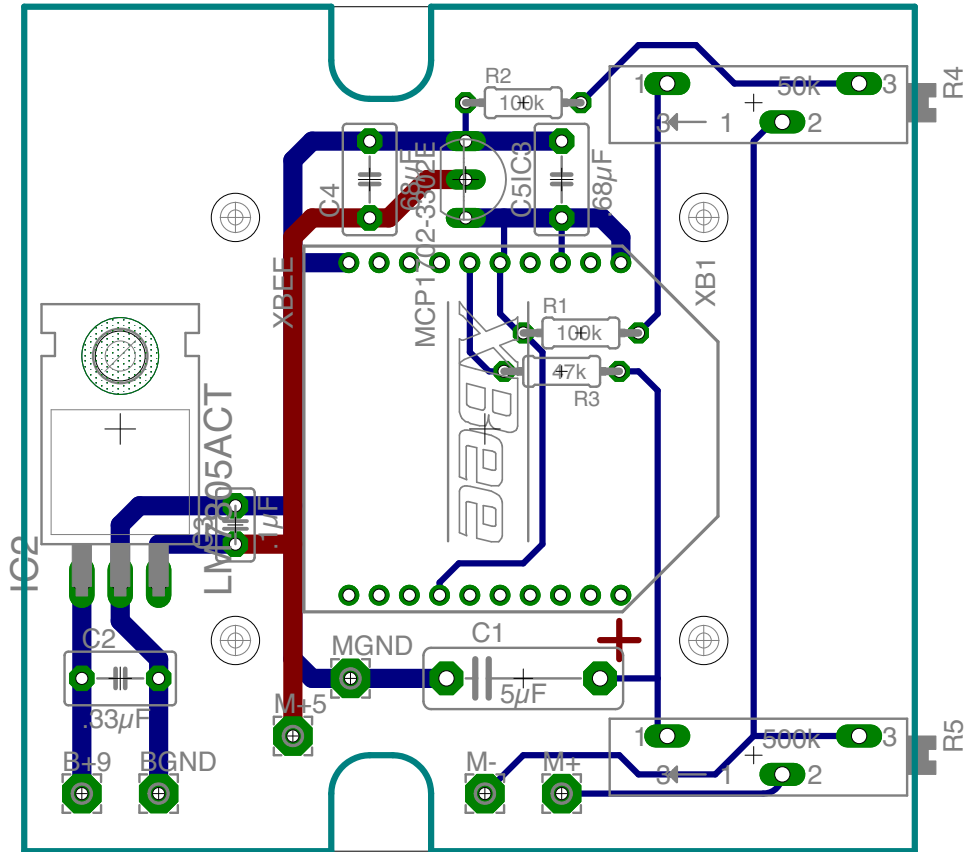
Below is how you assigned the layers when the file was submitted.

Layer Information for this 2 Layer board				
File Name	Assigned Layer Type	Assigned Layer Side	Assigned Polarity	Layer Sequence Assigned
dynocar_tx_rev1.drd	drill			
dynocar_tx_rev1.stc	solder_mask	top	positive	
dynocar_tx_rev1.cmp	mixed	top	positive	1
dynocar_tx_rev1.plc	silk_screen	top	positive	
dynocar_tx_rev1.sol	mixed	bottom	positive	2
dynocar_tx_rev1.sts	solder_mask	bottom	positive	

Drill Information for dynocar_tx_rev1.drd Layers 1 thru 2 Sierra internal reference: drill		
Finished Hole Size(mils)	Quantity	Type
31.50	20	plated
32.00	56	plated
36.00	4	plated
40.00	3	plated
44.00	8	plated
52.00	2	plated
59.00	2	plated
126.00	4	plated

Other Information about your Boards		
Quantity	Type	Feature
2	Solder Mask	Green
1	Silkscreen	White
	Board Thickness	0.062 inches
	Material Type	FR4
	Finish	HASL (solder)





Board Construction Summary

Please review all the information below. It is all the data we're using to build your boards.

Click here if you face any issues with this order.	
Part : DYNOCAR-RX / Rev : 1	AFV # : afv1-42375
Quantity : 4 Boards	Turntime : 4 Days

Below is how you assigned the layers when the file was submitted.

Layer Information for this 2 Layer board				
File Name	Assigned Layer Type	Assigned Layer Side	Assigned Polarity	Layer Sequence Assigned
dynocar_rx_rev1.drd	drill			
dynocar_rx_rev1.stc	solder_mask	top	positive	
dynocar_rx_rev1.cmp	mixed	top	positive	1
dynocar_rx_rev1.plc	silk_screen	top	positive	
dynocar_rx_rev1.sol	mixed	bottom	positive	2
dynocar_rx_rev1.sts	solder_mask	bottom	positive	

Drill Information for dynocar_rx_rev1.drd Layers 1 thru 2 Sierra internal reference: drill		
Finished Hole Size(mils)	Quantity	Type
31.50	20	plated
32.00	23	plated
40.00	8	plated
44.00	3	plated
126.00	4	plated
130.00	1	plated

Other Information about your Boards		
Quantity	Type	Feature
2	Solder Mask	Green
1	Silkscreen	White
	Board Thickness	0.062 inches
	Material Type	FR4
	Finish	HASL (solder)

Ident	Value	Manufacturer	M Part #	Description	Supplier	S Part #
C1	1000µF 50v			electrolytic axial lead aluminum	Anchor	\$0.49
C2	.33µF			dipped monolithic ceramic	Anchor	\$0.25
C3	.1µF			dipped monolithic ceramic	Anchor	\$0.14
C4	.68µF			dipped monolithic ceramic	Anchor	\$0.25
C5	.68µF			dipped monolithic ceramic	Anchor	\$0.25
C6	.1µF			dipped monolithic ceramic	Anchor	\$0.14
C7	.1µF			dipped monolithic ceramic	Anchor	\$0.14
D1	1N4001			rectifier 1A 50V	Anchor	\$0.10
D2	1N4001			rectifier 1A 50V	Anchor	\$0.10
D3	1N4001			rectifier 1A 50V	Anchor	\$0.10
D4	1N4001			rectifier 1A 50V	Anchor	\$0.10
D5	P6KE22CA	Fairchild	P6KE22CA	TVS Diode, 22V 600W DO-15	Newark	FAIRCHILD SEM
IC1	MC3403	ST Micro	MC3403N	Op-amp qual DIP	Newark	STMICROELEC
IC2	LM7805ACT	ST Micro	L7805ABV	5V pos voltage regulator 1A TO-220	Newark	STMICROELEC
IC3	MCP1700-3302E/	Microchip	MCP1700-3302E/TO	3.3v pos voltage regulator 250mA TO-92	Newark	MICROCHIPIMC
R1	47k			1/8w 5% resistor	Anchor	\$0.05
R2	47k			1/8w 5% resistor	Anchor	\$0.05
R3	10k			1/8w 5% resistor	Anchor	\$0.05
R4	4.7k			1/8w 5% resistor	Anchor	\$0.05
R5	47.k			1/8w 5% resistor	Anchor	\$0.05
R6	4.7k			1/8w 5% resistor	Anchor	\$0.05
R7	47k			1/8w 5% resistor	Anchor	\$0.05
R8	47k			1/8w 5% resistor	Anchor	\$0.05
R9	47k			1/8w 5% resistor	Anchor	\$0.05
R10	12 1w			1w 5% resistor	Anchor	\$0.10
R11	12 1w			1w 5% resistor	Anchor	\$0.10
R12	280			1/8w 5% carbon resistor	Anchor	\$0.05
XB1	XBEE	Digi	XB24-ACI-001	XBee 1mW 802.15.4 series 1 RF module	Parallax	XBee 1mW Chip
				socket kit for XBee	Parallax	XBee Adapter B
Ident	Value	Manufacturer	M Part #	Description	Supplier	S Part #
C1	4µF 12v			tantalum axial lead	Anchor	\$0.18
C2	.33µF			dipped monolithic ceramic	Anchor	\$0.25
C3	.1µF			dipped monolithic ceramic	Anchor	\$0.14
C4	.68µF			dipped monolithic ceramic	Anchor	\$0.25
C5	.68µF			dipped monolithic ceramic	Anchor	\$0.25
IC2	LM7805ACT	Fairchild	LM7805ACT	5V pos voltage regulator 1A TO-220	Newark	FAIRCHILD SEM
IC3	MCP1700-3302E/	Microchip	MCP1700-3302E/TO	3.3v pos voltage regulator 250mA TO-92	Newark	MICROCHIPIMC
R1	100k			1/8w 5% resistor	Anchor	\$0.05
R2	100k			1/8w 5% resistor	Anchor	\$0.05
R3	47k			1/8w 5% resistor	Anchor	\$0.05
R4	50k			3/4" long multi-turn trimpot	Anchor	\$1.25
R5	500k			3/4" long multi-turn trimpot	Anchor	\$1.25
XB1	XBEE	Digi	XB24-ACI-001	XBee 1mW 802.15.4 series 1 RF module	Parallax	XBee 1mW Chip
				socket kit for XBee	Parallax	XBee Adapter B